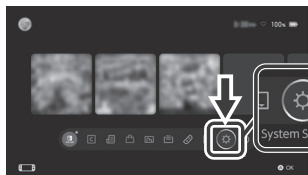


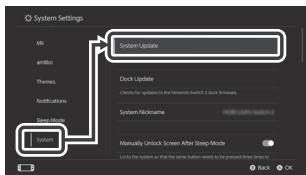
# Instruction Manual

Thank you for purchasing this product.  
Before use, please read the instruction manual carefully.  
After reading, please keep the manual for reference.

\*Make sure that your Nintendo Switch™ 2 is updated with the latest system software.



From the Home Menu select "Settings".



Select "System" and then "System Update" to update to the latest system software. (Please skip this step if the system already has the latest system software.)

\*This product is a controller designed exclusively for wireless communication. Wired communication is not supported.

\*This product does not support the following features:

- HD Rumble 2
- amiibo NFC
- Audio jack
- Waking system from Sleep Mode

## Caution

Parents / Guardians:

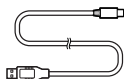
Please read the following information carefully.

- This product contains small parts. Keep away from children under 3 years old.
- Keep this product away from small children or infants. Seek medical attention immediately if any small parts are swallowed.
- Long cord. Strangulation hazard. Keep away from children under 3 years old.
- Do not pull the cable to unplug the controller from the console. Doing so may cause the cable to break or become damaged.
- Be careful not to get your foot caught on the cable. Doing so may cause bodily injury or damage to the cable.
- Do not bend the cables roughly or use the cables while they are bundled.
- Keep the product away from dusty or humid areas.
- Do not use this product if it has been damaged or modified.
- Do not get this product wet. This may cause an electric shock or malfunction.
- Do not place this product near heat sources or leave under direct sunlight for an extended period. Overheating may cause malfunction.
- Do not insert the USB plug into socket-outlets.
- Do not touch the metal parts of the USB plug.
- Do not apply strong impact or weight on the product.
- Do not disassemble, modify or attempt to repair this product.
- If product needs cleaning, use only a soft dry cloth. Do not use any chemical agents like benzene or thinner.
- The packaging must be retained since it contains important information.
- Please retain this instruction manual for your future reference.
- The normal function of the product may be disturbed by strong electro-magnetic interference. If so, simply reset the product to resume normal operation by following the instruction manual (How to Connect). In case the function does not resume, please relocate to an area which does not have electro-magnetic interference to use the product.
- Do not use this product for anything other than its intended purpose. We are not responsible for any accidents or damages in the event of use other than the intended purpose.

## Contents



Controller × 1



USB Charging cable  
(USB-A to USB-C™) × 1

## Compatibility

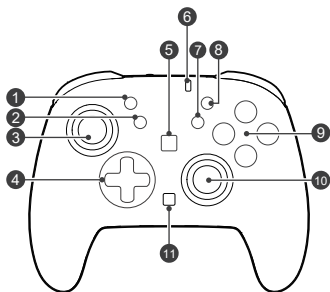
Nintendo Switch™ 2 / Nintendo Switch™ /  
Nintendo Switch™ – OLED Model / Nintendo Switch™ Lite  
\*This product cannot be used with a PC.

### Important

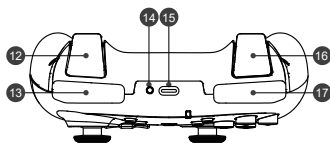
\*Make sure that your Nintendo Switch™ 2 is updated with the latest system software.

\*An internet connection is required to update the Nintendo Switch™ 2 to the latest system software.

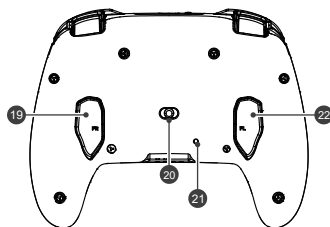
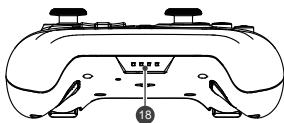
## Layout and Features



- ① - Button
- ② Capture Button
- ③ Left Analog Stick (LSB Button)
- ④ Directional Pad (Up / Down / Left / Right)
- ⑤ HORI Button
- ⑥ Status LED
- ⑦ HOME Button
- ⑧ +Button
- ⑨ A / B / X / Y Button
- ⑩ Right Analog Stick (RSB Button)
- ⑪ C Button

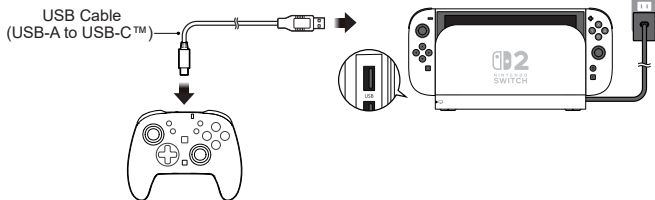


- ⑫ ZL Button
- ⑬ L Button
- ⑭ Sync Button
- ⑮ USB Port (USB-C™)
- ⑯ ZR Button
- ⑰ R Button
- ⑱ Player LED

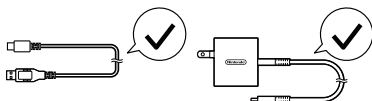


- ⑲ FR Button
- ⑳ Button Lock Switch
- ㉑ Reset Button
- ㉒ FL Button

## How to Charge



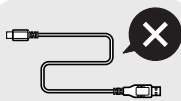
Please use the correct cable when charging the controller.



Included USB cable

Nintendo Switch™ 2 AC adapter

\*The controller can also be charged with the Nintendo Switch™ AC adapter.



✗ Other cables

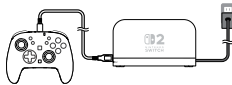
\*To prevent risk of damage to the controller, please do not use other cables.

The controller can be charged in the below instances.

\*Do not charge the controller outside of these instances.



With the AC adapter.



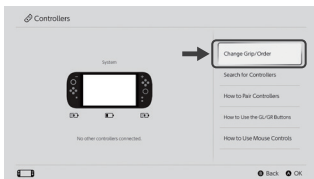
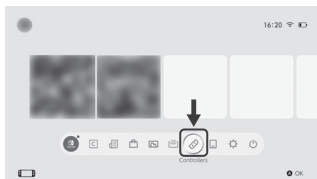
On the Nintendo Switch™ 2 charging dock when the Nintendo Switch™ 2 is not inserted.



On the Nintendo Switch™ 2 charging dock when the Nintendo Switch™ 2 is in Sleep Mode or powered OFF.

## How to Connect

1 From the Nintendo Switch™ 2 HOME Menu, select "Controllers" → "Change Grip / Order"

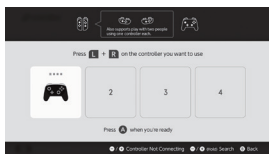
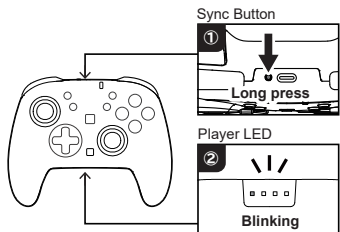


Perform this action with the Joy-Con™ 2 or Touchscreen.

- 2** Do a long press on the Sync Button of the controller until the player LEDs blink and the system confirms the controller has been detected.



**Avoid moving the L and R sticks while pairing or reconnecting the controller to prevent irregular inputs. The controller auto centers the L and R sticks while pairing or reconnecting.**



After the controller is connected, press the A button to use.

## Turbo / Turbo Hold Mode

The following buttons can be set to Turbo or Turbo Hold Mode

Programmable Buttons

A Button / B Button / X Button / Y Button / L Button / R Button / ZL Button / ZR Button / LSB Button / RSB Button / FL Button\* / FR Button\* / Directional Pad (Up / Down / Left / Right)\*

\*It is only possible to set Turbo or Turbo Hold Mode to the FL and FR buttons through Assign Mode.

\*Directional Pad (UP / DOWN / LEFT / RIGHT) is not compatible with the Turbo hold Mode, and can only be used to set

### Turbo Mode

Turbo will be activated while the button is pressed.



### Turbo Hold Mode

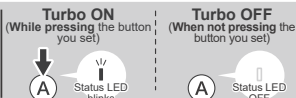
Continuously activates the button function without pressing the button.



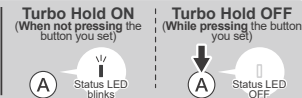
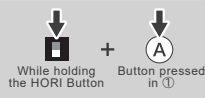
### Operation

### Status LED

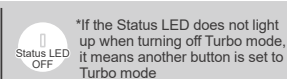
#### ① Turbo Mode



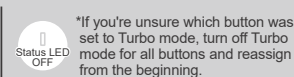
#### ② Turbo Hold Mode



#### ③ Turbo OFF



#### Turbo OFF (All buttons)



\*If you try to set Turbo / Turbo Hold and Assign modes at the same time, the Status LED will change colors to red and green.

\*The Function LED will flash at a rate corresponding to the Turbo speed.

\*If you press the HOME button the Turbo settings will reset. When starting up the game again, you will need to reconfigure Turbo settings.

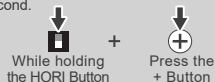
\*Some games may not be fully compatible with Turbo mode. In such cases, try changing the Turbo speed or turning it off

## How to change the TURBO Speed

Turbo Mode can be set to 3 different speeds.

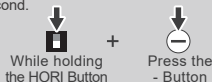
### Increasing the Turbo speed

While pressing the HORI Button and the + Button, you can increase the speed to 5, 10, or 20 presses per second.



### Decreasing the Turbo speed

While pressing the HORI Button and the + Button, you can decrease the speed to 20, 10, or 5 presses per second.



\*The default setting is 10 presses per second.

\*When changing the Turbo speed, the Status LED will blink to the set speed for about 2 seconds.

## ASSIGN Mode

You can remap the function of buttons using this feature.







### Programmable buttons

A Button / B Button / X Button / Y Button / Directional Pad (Up / Down / Left / Right) / L Button / R Button / ZL Button / ZR Button / LSB Button / RSB Button / FL Button / FR Button

### Assignable Functions

A Button / B Button / X Button / Y Button / Directional Pad (Up / Down / Left / Right) / L Button / R Button / ZL Button / ZR Button / LSB Button / RSB Button / + Button / - Button / NC (Button Function Disabled)

## [How to Assign Button Functions]

	Operation	LED Status	Setting Status
①	 Hold the HORI Button for 3 seconds	Status LED (Red)  Slow Blinking	Start setting *Button inputs are disabled during setting.
②	 Push the button you want to assign	 Blinks quickly	The button of the function you want to change is selected.
③	 To assign the function, press the button of the function you want to assign to in ②. (When setting multiple functions to one button) *When setting two functions to one button, press both buttons at the same time. or Long press the - Button for 3 seconds (When setting NC (Button disable))	 On	A function can be assigned to the button pressed in ②, however when set to NC (No Function), assignment will finish.





\*If you try to set Turbo / Turbo Hold and Assign modes at the same time, the Status LED will change colors to red and green.

\*If you don't press any buttons in steps ① and ② for more than 4 seconds, the Status LED will light up red and the Assign setting will end.

\*When multiple buttons are pressed in ③, the function of the last button pressed is assigned.

\*The settings will remain stored in the controller even after Nintendo Switch™ 2 is powered OFF or the USB cable is disconnected from the system.

## How to Reset buttons Individually





	Operation	LED Status	Setting Status
①	 Press HORI Button for 3 seconds	Status LED (Red)  Slow Blinking	Start setting *Button inputs are disabled during setting.
②	 To return a button to its default assigned function, press the button twice.	 Off	The button function is set to default and the setting function closes.

\*If you try to set Turbo / Turbo Hold and Assign modes at the same time, the Status LED will change colors to red and green.

\*If you don't press any buttons in steps ① for more than 4 seconds, the Status LED will light up red and the Assign setting will end.

\*The settings will remain stored in the controller even after Nintendo Switch™ 2 is powered OFF or the USB cable is disconnected from the system.

## Return all Buttons to Default

	Operation	LED Status	Setting Status
①	 Press HORI Button for 3 seconds	Status LED (Red)  Slow Blinking	Start setting *Button inputs are disabled during setting.
②	 Press the HOME Button	 Off	The button function is set to default and the setting function closes.

\*If you don't press any buttons in steps ① for more than 4 seconds, the Status LED will light up red and the Assign setting will end.





\*The settings will remain stored in the controller even after Nintendo Switch™ 2 is powered OFF or the USB cable is disconnected from the system.

## Profile

You can store up to 2 controller profiles.

You can configure and save changes from Assign Mode in the profile.

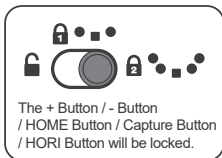
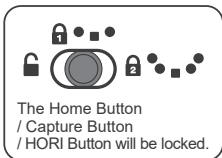
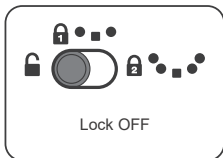
### [How to Set a Profile]

<b>Profile 1</b> When changing the profile the Status LED will quickly blink red 3 times.		+	
	While holding the HORI Button		Press the Capture Button
<b>Profile 2</b> When changing the profile the Status LED will quickly blink green 3 times.		+	
	While holding the HORI Button		Press the HOME Button

\*Resetting Assign Mode only applies to the active Profile.

## Button Lock Function

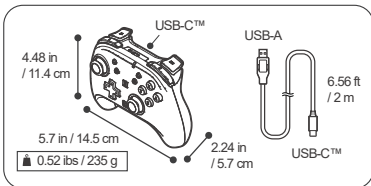
When switching the Lock Function on, you can lock part of the top front buttons.



## Specifications

Connection method	: Wireless Connection via Bluetooth® 5.0
Charging Time	: Approx. 3 hours
Battery Life	: Up to 10 hours
Wireless Connectivity	: 33 ft / 10 m
Operating frequency	: 2.4 GHz

\*Wireless connectivity may vary with charging times and continuous use. Charging times and wireless connectivity may vary over time.



The maximum radio-frequency power transmitted in the frequency band in which the equipment operates is: 8 dbm

**Need help with this product?**  
**Please visit this website for support.**

<https://stores.horiusa.com/nsx-131/support/>



## Regarding Wireless Interference

Please do not use this product where wireless devices are prohibited or near electrical devices such as cardiac pacemakers, medical devices, fire alarms or other emergency equipment. Wireless signals may interfere with such devices and cause accidents.

## Regarding Battery

If the battery leaks, please do not touch the liquid or battery with your bare hands. Do not place this product near heat sources or leave in direct sunlight. Internal battery life may deplete over time.

- Please be aware of the following during use and storage.
  - Do not place the product in or near fire.
  - Keep this product away from the following high temperature areas:
    - Near heaters, heat sources, or in direct sunlight.
    - Heated carpets or on top of home theater equipment.
    - Avoid using outdoors or inside a car during hot weather.
- Do not charge this product other than by its specified method. The built-in battery may overheat or rupture which may cause a fire or malfunction.
- Do not charge this product during a thunderstorm, as there may be risk of electric shock.
- Keep USB connector away from metal objects. This may cause malfunction or electric shock.
- Never disassemble, repair or modify this product. There is risk of fire, electric shock, battery rupture, or overheating.
- Do not drop, step on, crush, or strike the product with strong force. This may cause fire, battery rupture, overheating, or electric shock.
- Do not let liquid or foreign matter to enter the product. It may cause fire, electric shock, or malfunction. If any liquid or foreign matter gets inside the product, stop using the product immediately and contact our customer support.
- Keep the product away from water and do not use with wet or oily hands. It may cause electric shock or malfunction.
- Keep the product away from humid, dusty, or smoky areas. It may cause electric shock or malfunction.
- Keep the USB connector away from foreign matter or dust. It may cause electric shock, malfunction, or contact failure. Use a dry cloth to wipe off any foreign matter or dust.
- Charge this product where the room temperature is 10 - 35°C (50 - 95°F). Charging outside this temperature range may result in the product not charging properly or prolong the charging time.
- Please note that as with any rechargeable battery, the maximum amount of charge the battery can hold will gradually lessen over time after many charge cycles.
- If the battery life is significantly reduced or will not hold a charge it is possible the battery is at the end of its life.
- Recharge the battery at least once every three months to maintain function even if it has not been used for a prolonged time.



Li-ion 00

The Lithium Ion battery is made from recyclable resources.

The image on the package may differ from the actual product.  
The manufacturer reserves the right to change the product design or specifications without notice.  
"Bluetooth" is a registered trademark of Bluetooth SIG, Inc.  
USB-C is a registered trademark of USB Implementers Forum.  
HORI & HORI logo are registered trademarks of HORI.  
All other trademarks are the property of their respective owners.  
© Nintendo. Nintendo Switch is a trademark of Nintendo.